



ab. Ashton
Bentley.

Product Overview

Meeting Room Tables

Designed for Today's Collaboration Technology

The problem.

Tables in meeting rooms are generally not part of the audio-visual solution. Often purchased separately, contractors have to ‘force’ technology into them which fails to provide users with the best experience.

The focus is on “looks” rather than “functionality” which results in untidy, and unusable, spaces leading to frustration and ultimately the spaces not being used.

The solution.

The Ashton Bentley Table Range is designed to bridge the gap between furniture and audio-visual hardware.

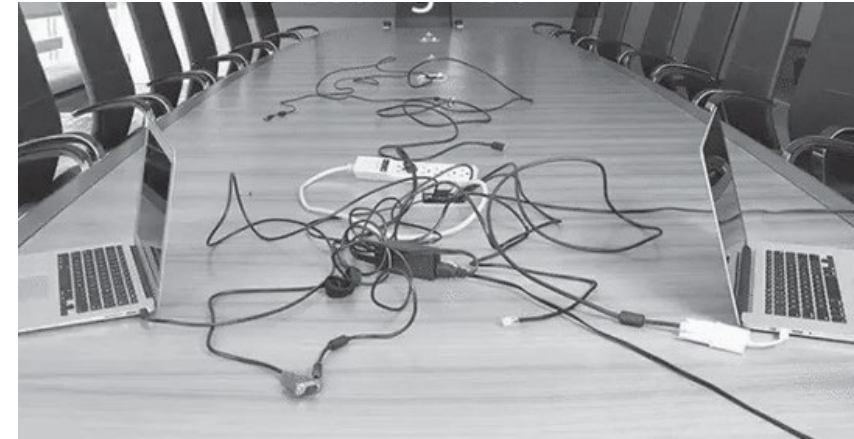
Combining user requirements with our deep understanding of technology deployed in a meeting space, Ashton Bentley tables deliver a reliable and frustration free collaboration experience.

Like all our products, our Tables are designed to solve problems and provide the best user experience when using audio-visual technology.

The underlying construction, and user features, are the same no matter what size or shape. This makes standardisation in buildings, and across global estates, very simple.

A range of stylish “feature” tables that not only look great but are optimised for all meeting spaces.

Walk in, sit down and work!



A far too common sight - A “modern” meeting space



Pick a cable - any cable!

Behind The Design

Designed for the AV Market

Leg Enclosure Features.

Easy Access Covers

Under-table leg cover is easy to remove to access electronics/cables.



Low level Cable Access

Cables can be run from floor level up through the table legs.



ab.

Power Block

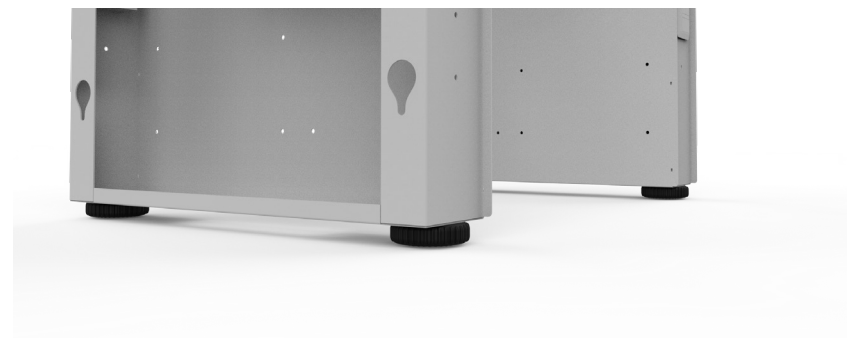
Each table leg is supplied with two power sockets and two USB charging sockets. Power can be country specific: UK/USA/EU/INDIA



USB Charging

Levelling Feet

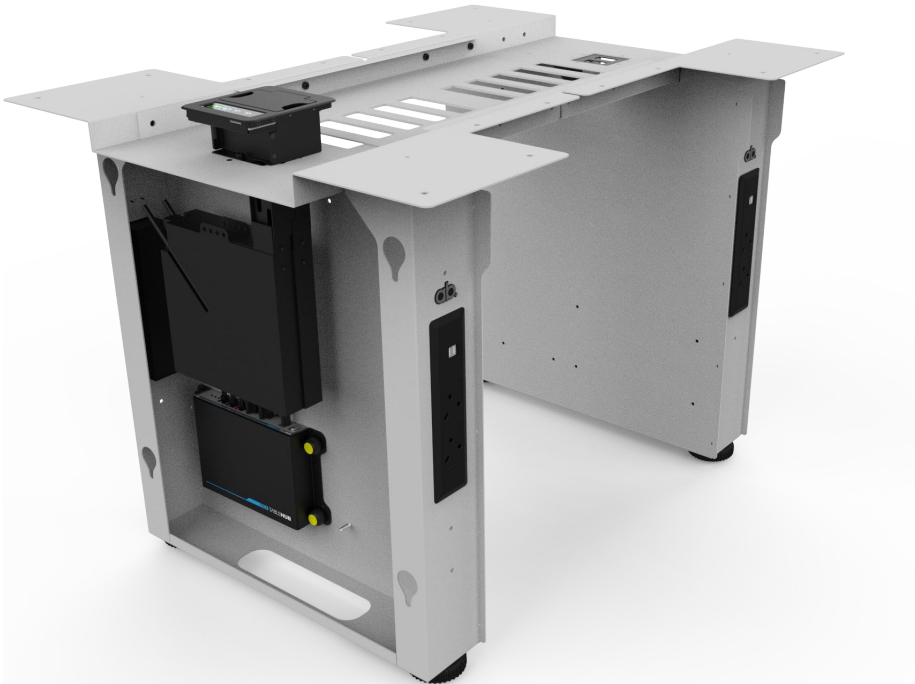
Adjustable feet are fitted to each leg to ensure the table surface is level and stable.



Leg Enclosure Features.

Enclosed Electronics

Under-table cover hides exposed electronics / cables.



Internal Cable Tray

Allowing cables and connectivity to pass between legs discretely, without any build works required.



Ergonomics.

Ashton Bentley tables have been designed with comfort, functionality, and the movement of the human body in mind, with focus being made on the following:

Reach

All peripherals and devices are within easy reach.

Sight

Users have clear line of sight to interact and connect with other users and presentation devices.

Placement of product

All items are located in a convenient place, are accessible, and do not impede the user's work space.

Body position

The user is placed in a comfortable position without causing fatigue or strain.



Table Height

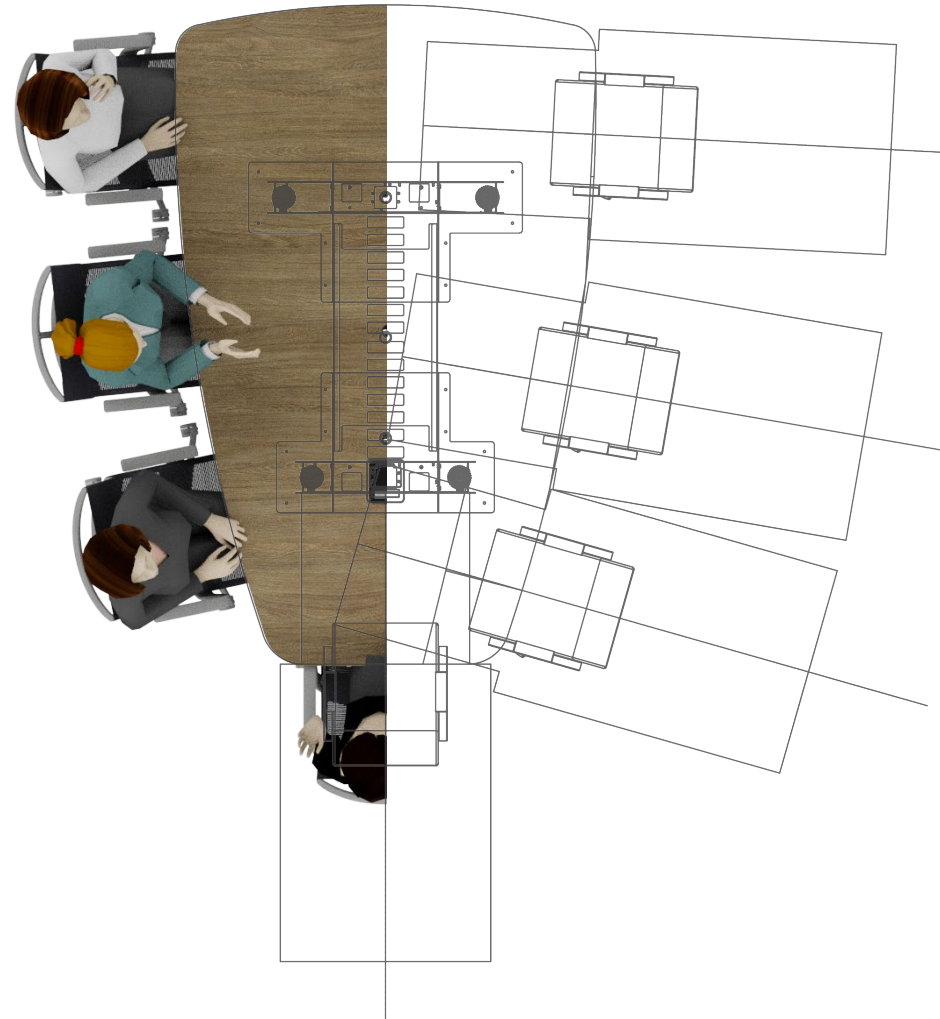
The table heights are set at 740mm (29"), and is designed with all people in mind, adopting the BIFMA's (The Business and Institutional Furniture Manufacturer's Association) suggested guidelines.



Spacing

Generous space is allocated to each user and personal devices allowing for a comfortable and uncluttered experience.

Strategic placement of the tables legs offers strength and rigidity, as well as ample space for users legs.



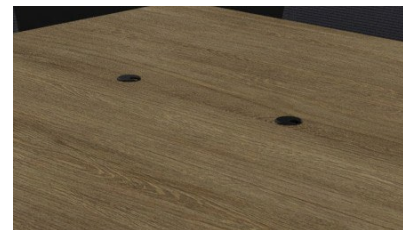


Cable Management.

Low level cable access in each leg (1 / 2 / 3) allowing for cables to be routed directly from sub-floor level to each element in / on the table.

Devices like (A) Touch panels, (B) Conference Phones, (C) Microphones, are neatly cabled keeping essential table space clear of clutter.

Power (region specific) and USB charging sockets (D) in each table leg close to users.



Equipment Grommets

Allows easy cable access to devices that are placed on the table surface.

Simple to Deploy

Easy, Repeatable, Scalable.

Simple to build.

Designed with a focus on ease of deployment and build. No expertise or prior knowledge is required. If you've ever made self assembly furniture you're all set....

Each table comes with:

- Comprehensive visual assembly guides and step by step build instructions
- All fixtures and fittings required
- Easily identifiable parts with clear markings on cartons

Items you may need:

- Minimum of two persons for build - (Some items are large & heavy)
- Power driver / drill to speed up assembly

Building Works

Very little work is required. Each unit is self supporting and only requires floor level grommets to be cut if required.

Grommets are spaced at uniform distances which makes marking them straight forward - with only one required for all table sizes (subject to requirement and preference).

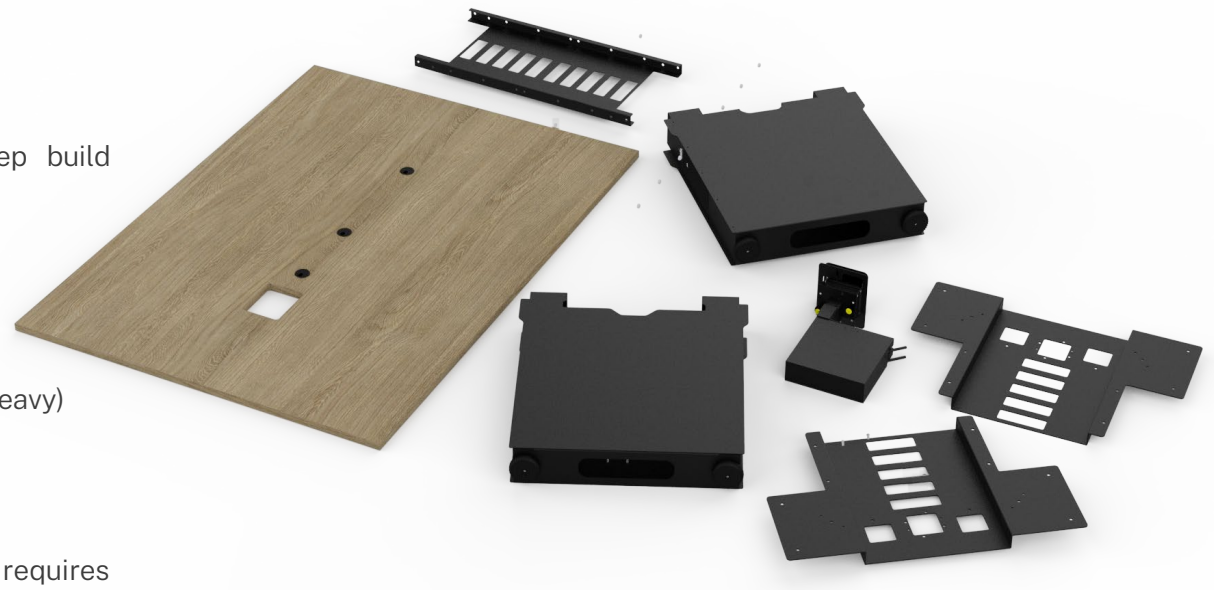
Shipping and logistics

The modular design means that each table is easy to palletise for shipping.

Ordering is simple. With a single part number covering all parts.

Scalable and Repeatable

Perfect for mass deployments and standardised room packages. The “out of box” approach ensures uniformity across an estate, with many component parts being universal - allowing for changes and re-deployments to meet the demands of an evolving workspace.



Surface Finish

Customise

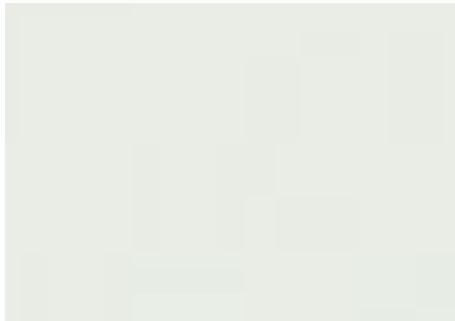
Available Surface Finishes.

Each table is supplied with a high quality and durable surface.

The solid white option is often used in neutral architectural designs. This white has a clear, almost “icy” matt effect that doesn’t reflect light.

The various wood textures are designed to capture the growing popularity of natural wood furniture, with an elegant and natural woodgrain structure, enhanced by a depth to the pattern, resulting in a tactile crafted texture.

Solid Colour



White

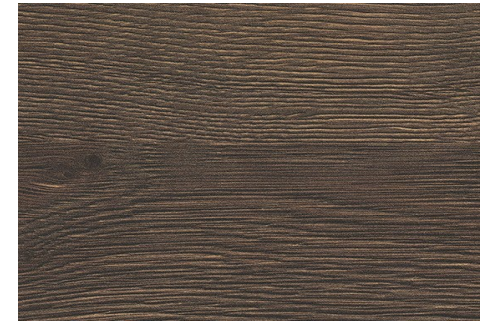
Wood Veneer



Light Wood



Grey Wood



Dark Wood

Table Edge Profiles

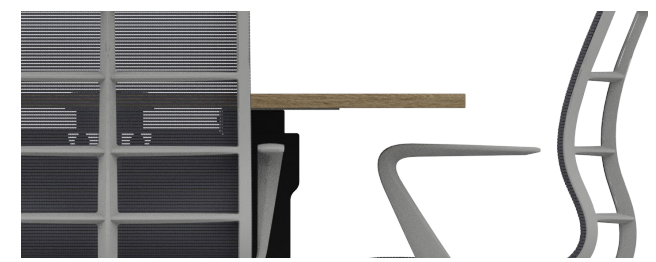
There are two edge finishes applied to the tables to accent the surfaces profiles:

Shaped tables - subtle chamfer that runs around the under surface profile

Rectangular/TP - clean straight edge



Chamfered Edge - Shaped Tables Only



Straight Edge - Rectangular & TP Tables



Shaped Tables

Optimised for Video



Shaped Tables - Introduction.

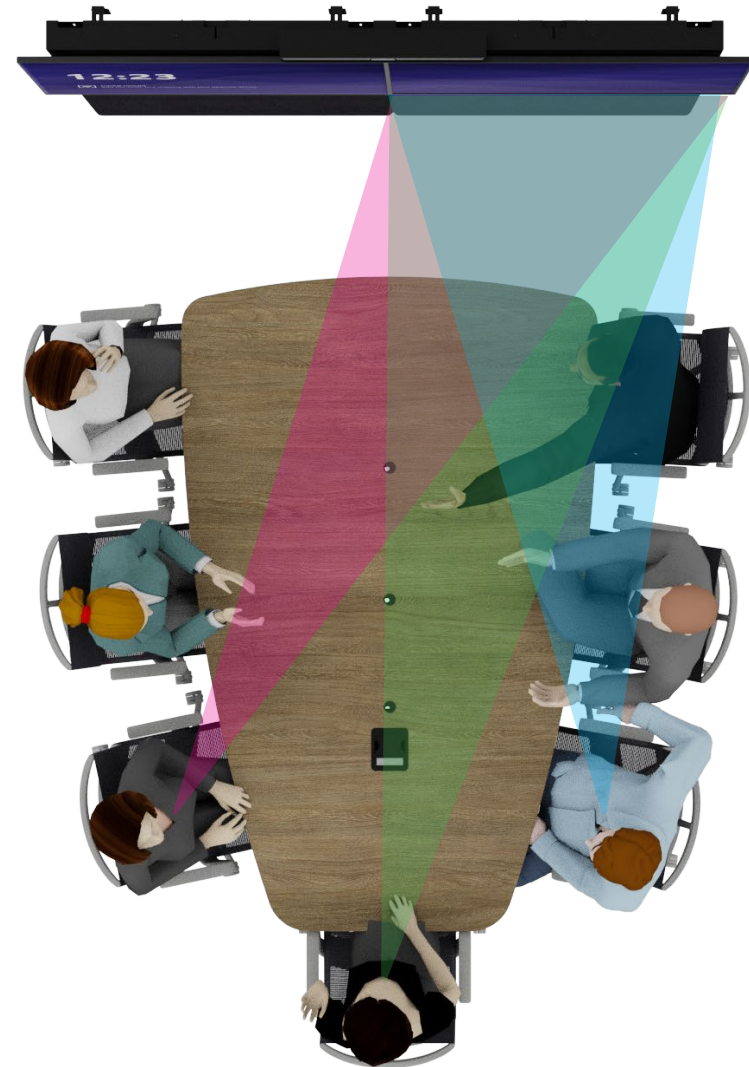
The shaped table range is an elegant solution that is designed to place users in the optimal position for camera, whilst on a video call.

The ergonomic table shape allows users to maintain good eye contact, and connection with other participants both “in-room” and “online”.

The subtle curves of the table surface also place users so they do not obstruct any content that is being presented on screen.

Users have easy access to power and USB Charging sockets, in addition to any input connection available on the table.

Easy to deploy, and simple to use, the shaped table range is an ideal solution for standardised video deployments throughout a global estate.





ST7 Shaped 7 Seat Table

(shown with Connect Two55)



ST8 - Shaped 8 Seat Table

(shown with Connect two65)



ab

ST9 - Shaped 9 Seat Table

(shown with Connect Two65)



ST10 - Shaped 10 Seat Table

(shown with Connect two65)



Rectangular Tables

Optimised for Space





RT5 - Rectangular 5 Seat Table

(shown with Connect One55)



RT7 - Rectangular 7 Seat Table

(shown with Connect One65)



RT9 - Rectangular 9 Seat Table

(shown with Connect One75)



RT11 - Rectangular 11 Seat Table

(shown with Connect One75)

Shaped Huddles

Optimised for Collaborative Meetings



Shaped Huddle Range.



Huddle43.CT3
43" Display + Circular C Seat Table



Huddle43.ST2
43" Display + Shaped 2 Seat Table



Huddle43.ST3
43" Display + Shaped 3 Seat Table



Huddle55.ST5
55" Display + Shaped 5 Seat Table



Huddle55/65.ST7
55" (or 65") Display + Shaped 7 Seat Table



Huddle43.CT3 - 43" Display + attached Circular 3 Seat Table



Huddle43.ST3 - 43"Display + attached Shaped 2 Seat Table



Huddle43.ST3 - 43"Display + attached Shaped 3 Seat Table



Huddle55.ST5 - 55" Display + attached Shaped 5 Seat Table



Huddle55.ST7 - 55" Display + attached Shaped 7 Seat Table

(also available with 65" Display)



Rectangular Huddles

Maximising Space



Rectangular Huddle Range.



Huddle55.RT5
55" Display + Rectangular 5 Seat Table



Huddle55/65.RT7
55" (or 65") + Rectangular 7 Seat Table



Huddle55.RT5 - 55" Display + attached Rectangular 5 Seat Table



Huddle55.RT7 - 55" Display + attached Rectangular 7 Seat Table

(also available with 65" Display)

A long, curved wooden conference table with a light-colored wood grain finish. The table is supported by a dark, possibly black, base. Several light blue chairs are arranged around the table. On the table surface, there are several circular cutouts and a small, dark rectangular device with the 'ab.' logo on it.

Immersive Tables

Designed for Complete Engagement



TP4 – Shaped Immersive 4 Seat Table



TP6 – Shaped Immersive 6 Seat Table



ab.

TP4 - Immersive Shaped 4 Seat Table

(shown with Connect One105)



TP6 - Immersive Shaped 6 Seat Table

(shown with Connect Two86)



Chairs

Enhance the User Experience



Sedus se:joy Chairs.

A modern design, comfortable seating, and intuitive functionality make it perfect for meeting tables.

Excellent value for money.

Available Finishes.



Frame Colour.



Black Light grey

Sedus se:flex Chairs.

Comfortable chair which adjusts automatically to the requirements of the most diverse users, regardless of how tall or heavy they are.

A pleasant and ergonomic sitting experience right from the start.

Available Finishes.



Frame Colour.



Black Light Grey